



Where Comfort  
meets Luxury





# Celebrate Cooking

with Skyler

We believe kitchen is the most important room in the house and is considered as heart of the home. With German Machinery and high quality material, Skyler is dedicated to create your Dream Kitchen. We understand that a modern, well designed, aesthetically pleasing kitchen

- Makes cooking more enjoyable & efficient.
- Adds more storage.
- Makes life hustle free.
- Is safe, smart, & efficient.
- Adds luxury to lifestyle.

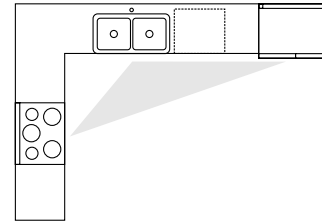




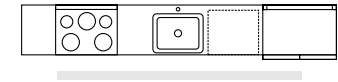
# A Perfect Layout

that suits your cooking space

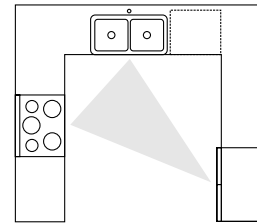
The kitchen where you are going to spend your precious time, Let's choose a smart and organized one so that the women of the house can cook safely, easily and hustle free.



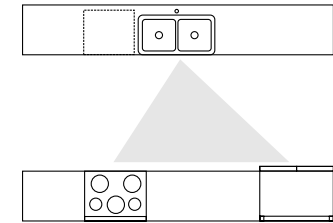
L-Shape Kitchen



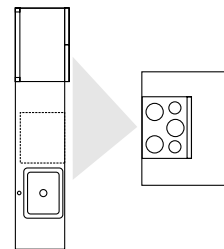
Straight Kitchen



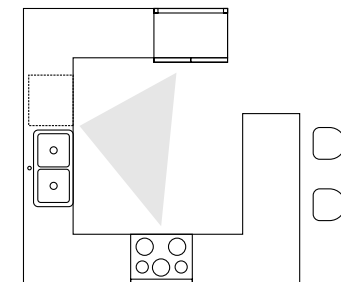
U-Shape Kitchen



Parallel Kitchen / Gallery Kitchen



Island Kitchen



G-Shaped / Peninsula Kitchen



# Finishes

that reflect your style

## PU Matte

Like laminate shutters there is a wide variety of paint finishes, we recommend the one with a high level of coating and proper buffing for good gloss factor. These shutters have seamless edges. This gives a sleek and perfect look to the shutters.



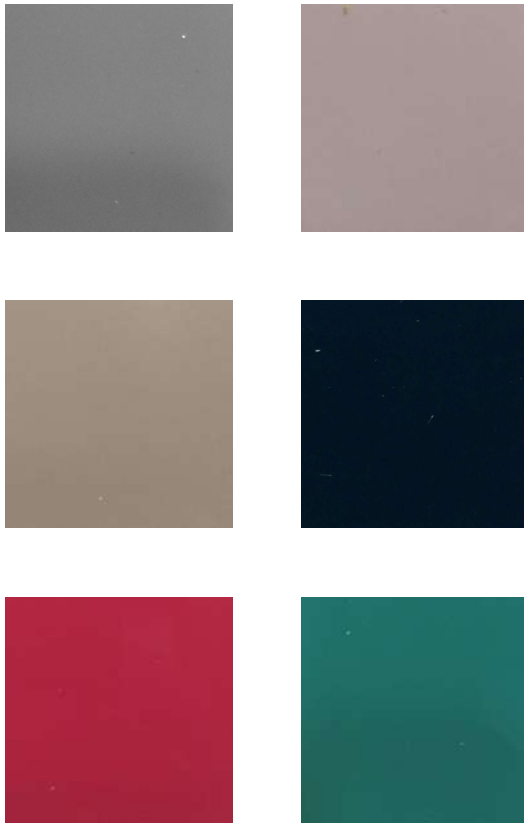


# Finishes

that reflect your style

## PU High Gloss

PU painted Kitchen Shutter that signifies bright, Sober and combination of Combo Color. It's a wonderful paint finish on the MDF/HDF for the modular Kitchens. A customer can ask for any color for any design.



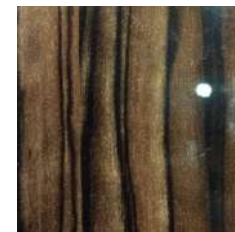
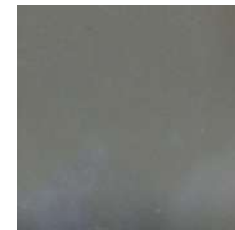


# Finishes

that reflect your style

## UV Board

UV finish offers a reflective glossy look, it is extremely durable and resistant to heat, scratches or dents. provides high moisture resistant and prevents delaminating of surfaces, and cleaning is a breeze.





# Finishes

that reflect your style

## High-Gloss Laminates

High glossy laminates are a good alternative to Acrylic or PU finish as they are relatively cheaper and low maintenance. Recommended material for the shutter is exterior grade MDF board as an uneven surface of ply might impact the finish.



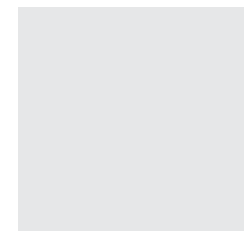
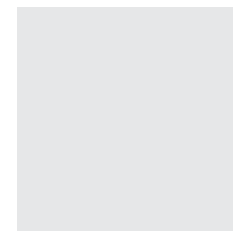
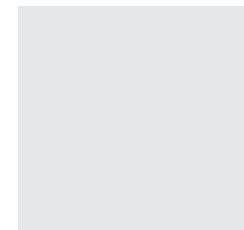
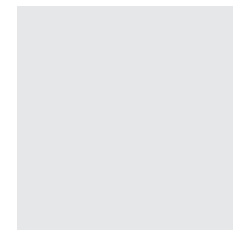
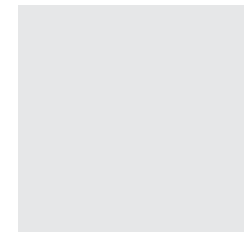
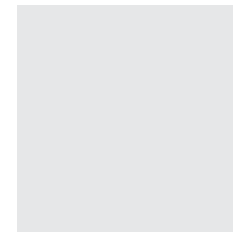


# Finishes

that reflect your style

## Back Painted Glass

Back painted glass is stuck on surface of marine ply shutters & it's toughened so in-case glass breaks, it will not harm you. Painting is done on the back side of glass so there no chance of color fading in future. If it breaks than you can replace it easily.



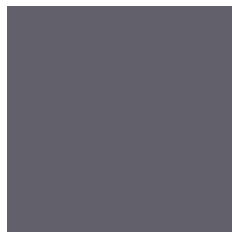


# Finishes

that reflect your style

## Acrylic

Acrylic gives your kitchen extra glossy finish and its durable product. It is available in variety of plain & sparkling colors, which can easily last for 10 to 15 years.





# Accessories

that completes the Essence of Cooking



**Drawer systems** - Space for everything



**Tall units** - Stock your knick-knacks and groceries



**Pull-outs** - For oil and condiments



**Cutlery trays** - Organized drawer space



**Corner solutions** - Space-saving corner unit



**Bar Units** - Add luxury to your lifestyle.

# Brands

we are associated with

## ACCESSORIES

**HÄFELE**

**hettich**



**blum**

**G\*GRASS**

## MACHINERY



**HE HOMAG**



## BASE MATERIAL



**Greenply**  
PLYWOOD

**Kitply**



3rd floor Gokul Tower,  
VIP Estate Shankar Nagar,  
Khamardih, Raipur, CG



9826824400



skylerkitchens@gmail.com



www.skylerkitchens.com

---